

**true**  
SCIENTIFIC

**true**  
SCIENTIFIC

# SCIENTIFIC SERIES

The most trusted name in refrigeration designed specifically for pharmacy, laboratory, and clinical applications.

**PHARMACY**

**LABORATORY**

**CHROMATOGRAPHY**

**true**  
SCIENTIFIC



*True*





True has been designing and manufacturing durable, stable, and environmentally friendly refrigeration systems for more than 75 years. This experience has enabled us to become experts in creating systems that can withstand even the most challenging applications. As technology advances, so do our products. By incorporating new technologies, our products become more efficient without sacrificing the performance that sets us apart globally. A family-owned business since its inception, we at True pride ourselves on being an American-made manufacturer with over 4.2 million square feet of advanced manufacturing space. True has been manufacturing products for scientific applications for several years.

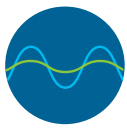
Now we introduce our new brand True Scientific to provide a refrigeration line designed specifically for pharmacy, laboratory, and clinical applications.



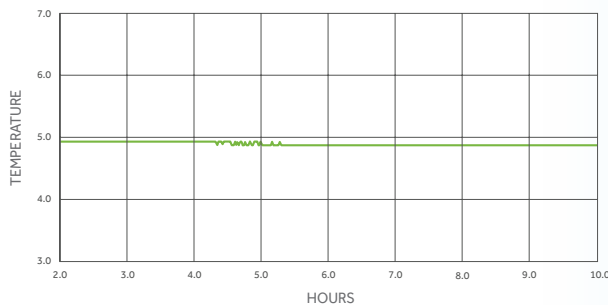


True Scientific units are specifically designed to operate within a narrow temperature range, provide superior temperature uniformity and stability within the entire cabinet as emphasized by CDC guidelines and NSF 456 standard for vaccine refrigerators.

Changes in temperature, especially freezing and thawing, can have a drastic impact on vaccines, laboratory samples, and clinical products. It is critical that products requiring refrigeration are stored in a unit that has minimal temperature variation (stability) and has consistent temperatures throughout the cabinet (uniformity) to assure all your stored products remain safe and secure.



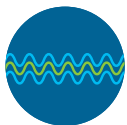
## Temperature Stability



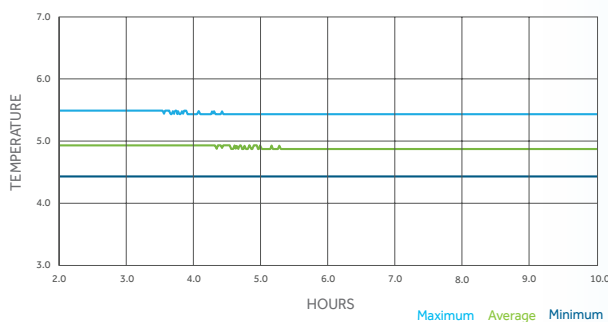
Designed to operate within a **narrow temperature range.**

Our average stability is 0.7°C, providing fewer deviations from the set point and avoiding rapid, and significant changes in cabinet temperature. True's responsive control system enables **quick recovery** after door openings, with a peak variance of only 3.2°C.

\*Varies from model to model



## Temperature Uniformity



Ensuring **temperature uniformity** throughout the cabinet.

Our expertly designed air circulation and refrigeration systems ensure temperature uniformity throughout the cabinet, with a +/- 1°C tolerance, eliminating hot and cold spots that could put your contents at risk.

\*Varies from model to model



## RELIABILITY YOU CAN COUNT ON

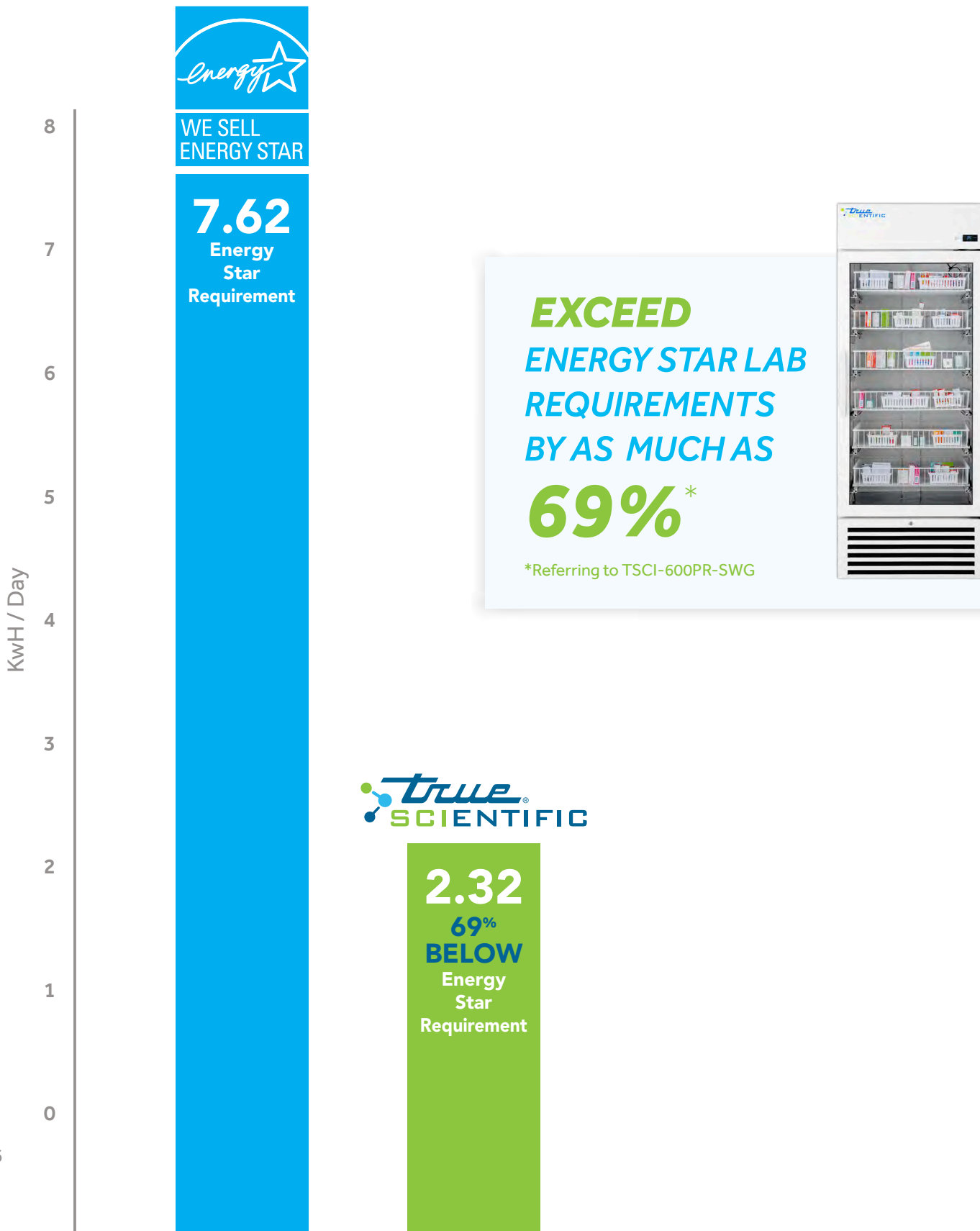
Made with a dedication to quality and performance, True Scientific meets CDC guidelines for vaccine storage. The True Scientific commitment to quality is demonstrated by its 3-year labor and 5-year parts warranty PLUS a 7-year warranty on the compressor.



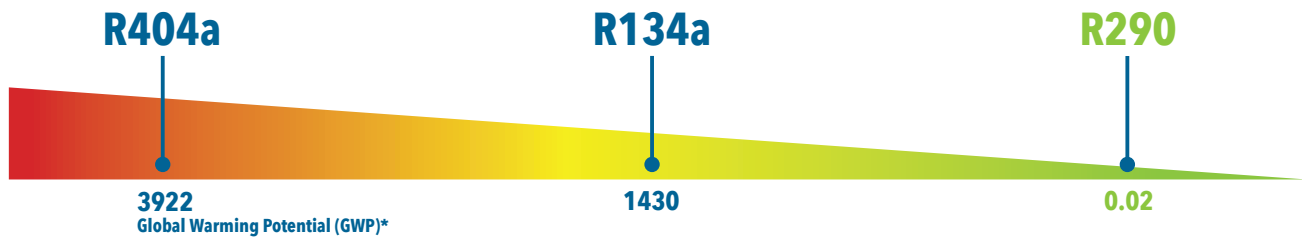
TSCI-550 FOR  
ENERGY STAR  
TESTING

# The Industry Leader in ENERGY EFFICIENCY & SUSTAINABILITY

True Scientific products use R290, a natural refrigerant that is future-proof and sustainability sourced. The series sets sustainability standards while providing increased efficiency and reduced operating cost.



# All natural HYDROCARBON REFRIGERANT R290



R290 is highly refined propane, that is nontoxic, has no ozone-depleting properties and offers low Global Warming Potential (GWP) making it one of the most climate-friendly and cost-effective refrigerants. It is a safe, environmentally friendly alternative for the high GWP hydro fluorocarbon (HFC) refrigerants R134a and R404a.

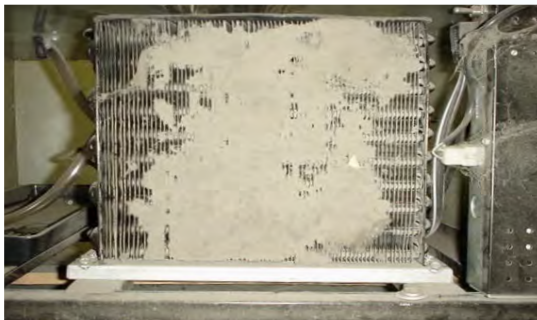
\*GWP is the relative measure of how much heat a greenhouse gas traps in the atmosphere. The lower the GWP the better a substance is for the environment.



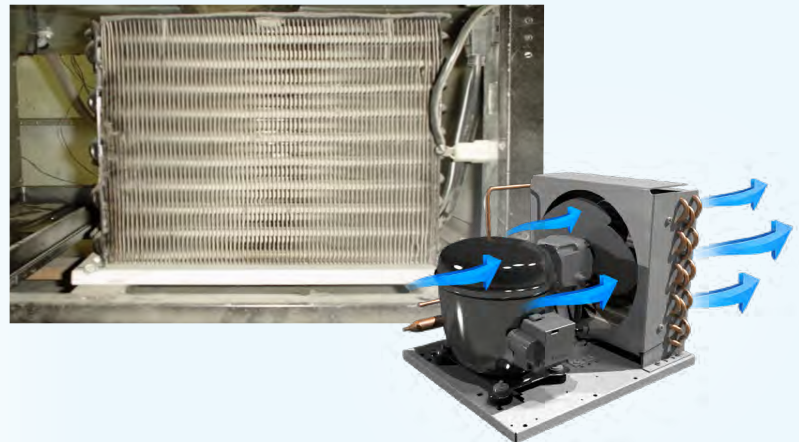
## Self-Cleaning Condenser Technology

AFTER 18 MONTHS

**WITHOUT** SELF-CLEANING TECHNOLOGY



**WITH** SELF-CLEANING TECHNOLOGY



True's exclusive Self-Cleaning Reverse Condenser technology, reverses the direction of the condensing fan for 20 seconds at each compressor start up to remove excess debris from the interior and surface of the condensing coil which keeps your unit operating at peak efficiency. Self-Cleaning technology is available in all True Scientific models. This technology ensures the coldest temperature, lower energy consumption, and increased lifespan of your True product.







# TSCI Customization & Accessories

The below items can be ordered to customize your True Scientific unit.



Castors



Seismic Legs



Leg



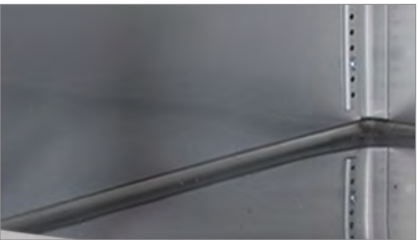
Full Shelf



Half Shelf

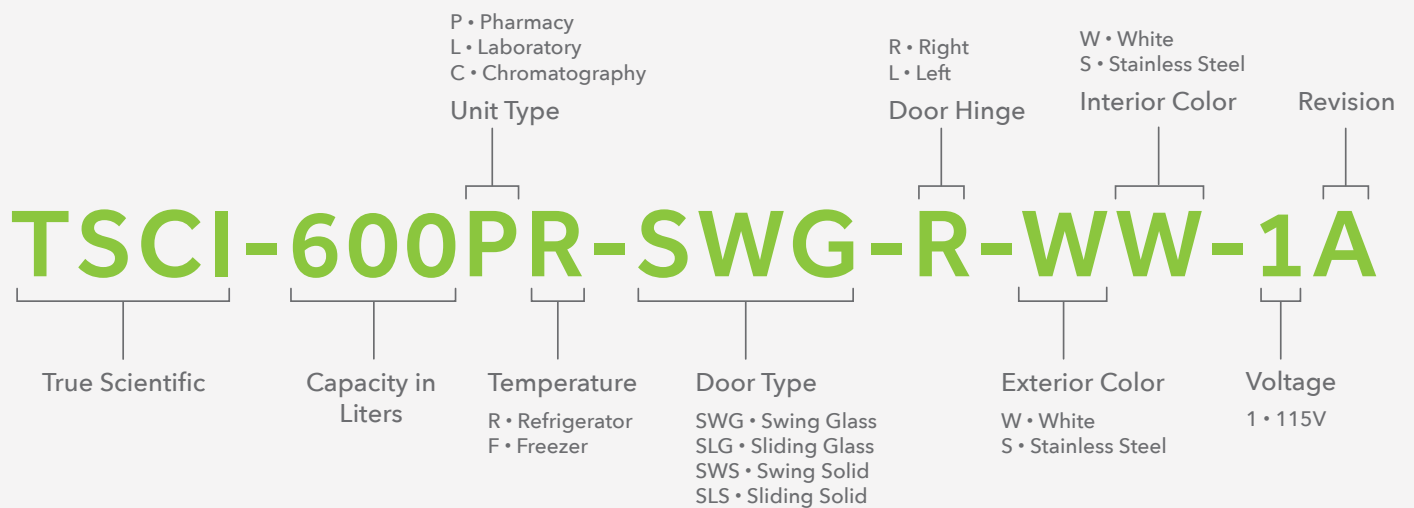


Chromatography Mast



Stainless Steel Interior & Exterior

## NOMENCLATURE





# PHARMACY REFRIGERATORS

Specifically designed to keep drugs, vaccines, and other products safe and secure, with a temperature range of 2°C to 8°C. True Scientific pharmacy refrigerators offer a range of features to ensure the optimal temperature.

- 1 Digital Displays and Controls**

Digital display of set temperature and current temperature, battery backup for display, alarms for high/low temp, power failure, and door ajar.
- 2 Anti-Microbial Door Handle**
- 3 Standard Door Lock**
- 4 LED Lighting**

Switch-controlled full interior high-efficiency lighting.
- 5 Simulated Temperature Monitoring**

Measured in a glycol-filled bottle to simulate actual product temperature.



- 6 Flexible Shelving**

Adjustable perforated and non-peel white coated steel shelves, ideal for storing large containers as well as vials and tubes.
- 7 Self-Closing, Energy Efficient Door**

Positive seal self-closing door with replaceable magnetic door gasket and insulated glass.



TSCI-150



Model	External (W x D x H) in. (mm)	Temp Uniformity	Temp Stability	Energy Usage (kW/Day)	Doors	Shelves (W x D) in.
TSCI-150PR- SWG	24 x 24 ¾ x 31 ½ (610 x 629 x 803)	0.9°C	0.9°C	1.027	1 Glass	Full: 20 x 12 ⅞ Half: 20 x 8 ⅞ Floor Rack: 20 x 8 ⅞
TSCI-150PR-SWS		0.9°C	1.2°C	0.78	1 Solid	

TSCI-450



Model	External (W x D x H) in. (mm)	Temp Uniformity	Temp Stability	Energy Usage (kW/Day)	Doors	Shelves (W x D) in.
TSCI-450PR- SWG	27 x 24 ⅞ x 78 ⅝ (686 x 632 x 1997)	0.7°C	0.7°C	2.260	1 Glass	Full: 24 ⅞ x 16 ⅞
TSCI-450PR-SWS		0.4°C	0.6°C	1.742	1 Solid	

TSCI-550



Model	External (W x D x H) in. (mm)	Temp Uniformity	Temp Stability	Energy Usage (kW/Day)	Doors	Shelves (W x D) in.
TSCI-550PR- SWG	27 x 29 ¾ x 78 ½ (686 x 756 x 1994)	0.5°C	0.8°C	2.246	1 Glass	Full: 21 ⅞ x 22 ⅞
TSCI-550PR-SWS		0.6°C	0.8°C	1.76	1 Solid	

TSCI-600



Model	External (W x D x H) in. (mm)	Temp Uniformity	Temp Stability	Energy Usage (kW/Day)	Doors	Shelves (W x D) in.
TSCI-600PR- SWG	30 x 29 ¾ x 78 ½ (762 x 756 x 1994)	0.6°C	0.6°C	2.322	1 Glass	Full: 25 ⅞ x 21 ⅞
TSCI-600PR-SWS		0.4°C	0.7°C	1.856	1 Solid	

TSCI-1000



Model	External (W x D x H) in. (mm)	Temp Uniformity	Temp Stability	Energy Usage (kW/Day)	Doors	Shelves (W x D) in.
TSCI-1000R-G	47 ⅞ x 29 ⅞ x 78 ⅞ (1216 x 759 x 1997)	0.8°C	0.7°C	2.403	2 Glass	Full: 20 ⅞ x 22 ⅞

TSCI-1200



Model	External (W x D x H) in. (mm)	Temp Uniformity	Temp Stability	Energy Usage (kW/Day)	Doors	Shelves (W x D) in.
TSCI-1200R-G	54 ⅞ x 29 ¾ x 78 ½ (1375 x 756 x 1994)	0.7°C	0.6°C	3.294	2 Glass	Full: 24 ¼ x 22 ⅞

\*Available in glass or solid door options

# LABORATORY REFRIGERATORS

Specifically designed for the storage of reagents, biologics, and other products with a temperature range of 2°C to 10°C. True Scientific laboratory refrigerators offer a range of features to ensure the optimal temperature.

## 1 Digital Displays and Controls

Digital display of set temperature and current temperature, battery backup for display, alarms for high/low temp, power failure, and door ajar.

## 2 Anti-Microbial Door Handle

## 3 Standard Door Lock

## 4 LED Lighting

Switch-controlled full interior high-efficiency lighting.

## 5 Two Access Ports

Support external temperature device or additional cabinet access.

## 6 Simulated Temperature Monitoring

Measured in a glycol-filled bottle to simulate actual product temperature.

## 7 Flexible Shelving

Adjustable perforated and non-peel white coated steel shelves, ideal for storing large containers as well as vials and tubes.

## 8 Self-Closing, Energy Efficient Door

Positive seal self-closing door with replaceable magnetic door gasket and insulated glass.





**TSCI-150**



Model	External (W x D x H) in. (mm)	Temp Uniformity	Temp Stability	Energy Usage (kW/Day)	Doors	Shelves (W x D) in.
TSCI-150LR- SWG	24 x 24 ¾ x 31 ½ (610 x 629 x 803)	0.9°C	0.9°C	1.027	1 Glass	Full: 20 x 12 ⅞ Half: 20 x 8 ⅞ Floor Rack: 20 x 8 ⅞
TSCI-150LR-SWS		0.9°C	1.2°C	0.78	1 Solid	

**TSCI-450**



Model	External (W x D x H) in. (mm)	Temp Uniformity	Temp Stability	Energy Usage (kW/Day)	Doors	Shelves (W x D) in.
TSCI-450LR- SWG	27 x 24 ⅞ x 81 ⅝ (686 x 632 x 2073)	0.7°C	0.7°C	2.260	1 Glass	Full: 24 ⅞ x 16 ⅞
TSCI-450LR-SWS		0.4°C	0.6°C	1.742	1 Solid	

**TSCI-550**



Model	External (W x D x H) in. (mm)	Temp Uniformity	Temp Stability	Energy Usage (kW/Day)	Doors	Shelves (W x D) in.
TSCI-550LR- SWG	27 x 29 ¾ x 78 ½ (686 x 756 x 1994)	0.5°C	0.8°C	2.246	1 Glass	Full: 21 ⅞ x 22 ⅞
TSCI-550LR-SWS		0.6°C	0.8°C	1.76	1 Solid	

**TSCI-600**



Model	External (W x D x H) in. (mm)	Temp Uniformity	Temp Stability	Energy Usage (kW/Day)	Doors	Shelves (W x D) in.
TSCI-600LR- SWG	30 x 29 ¾ x 81 ⅞ (762 x 756 x 2075)	0.6°C	0.6°C	2.322	1 Glass	Full: 25 ⅞ x 21 ⅞
TSCI-600LR-SWS		0.4°C	0.7°C	1.856	1 Solid	

\*Available in glass or solid door options

# CHROMATOGRAPHY REFRIGERATORS

Specifically designed for the storage of chromatography supplies, reagents, buffers, large or tall containers and columns with a temperature range of 2°C to 10°C.

- 1 Digital Displays and Controls**  
Digital display of set temperature and current temperature, battery backup for display, alarms for high/low temp, power failure, and door ajar.
- 2 Anti-Microbial Door Handle**
- 3 Standard Door Lock**
- 4 LED Lighting**  
Switch-controlled full interior high-efficiency lighting.
- 5 Two Access Ports**  
Support external temperature device or additional cabinet access.
- 6 Simulated Temperature Monitoring**  
Measured in a glycol-filled bottle to simulate actual product temperature.



- 7 Flexible Shelving**  
Adjustable perforated and non-peel white coated steel shelves, ideal for storing large containers as well as vials and tubes.
- 8 Self-Closing, Energy Efficient Door**  
Positive seal self-closing door with replaceable magnetic door gasket and insulated glass.
- 9 Chromatography Mast (optional)**  
Supports larger items within the refrigerator.
- 10 Duplex Electrical Outlet**  
Located inside the cabinet on all chromatography models.



TSCI-450



Model	External (W x D x H) in. (mm)	Temp Uniformity	Temp Stability	Energy Usage (kW/Day)	Doors	Shelves (W x D) in.
TSCI-450CR- SWG	27 x 24 7/8 x 81 5/8 (686 x 632 x 2073)	0.7°C	0.7°C	2.260	1 Glass	Full: 24 5/16 x 16 15/16
TSCI-450CR-SWS		0.4°C	0.6°C	1.742	1 Solid	

TSCI-550



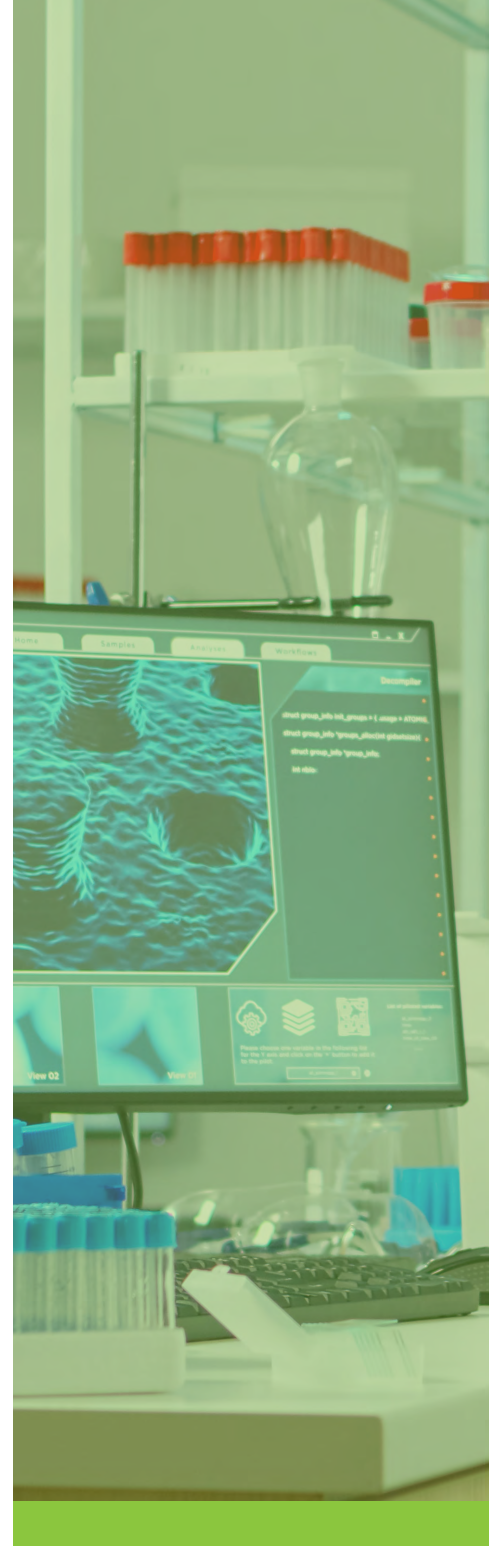
Model	External (W x D x H) in. (mm)	Temp Uniformity	Temp Stability	Energy Usage (kW/Day)	Doors	Shelves (W x D) in.
TSCI-550CR- SWG	27 x 29 3/4 x 78 1/2 (686 x 756 x 1994)	0.5°C	0.8°C	2.246	1 Glass	Full: 21 15/16 x 22 7/32
TSCI-550CR-SWS		0.6°C	0.8°C	1.76	1 Solid	

TSCI-600



Model	External (W x D x H) in. (mm)	Temp Uniformity	Temp Stability	Energy Usage (kW/Day)	Doors	Shelves (W x D) in.
TSCI-600CR- SWG	30 x 29 3/4 x 81 1/16 (762 x 756 x 2075)	0.6°C	0.6°C	2.322	1 Glass	Full: 25 5/16 x 21 15/16
TSCI-600CR-SWS		0.4°C	0.7°C	1.856	1 Solid	

\*Available in glass or solid door options



2001 East Terra Lane, O'Fallon, MO 63366-4434 p: 636.240.2400 f: 636.272.2408 toll free: 800.325.6152 parts toll free: 800.424.8783

[truemfg.com/scientific](http://truemfg.com/scientific) | [f](#) [p](#) [v](#) [x](#) [i](#)

AB\_206812\_4.23