

PHARMACY

LABORATORY

CHROMATOGRAPHY

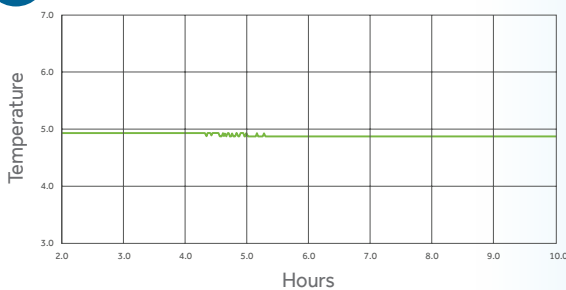


EXCEED ENERGY STAR® LAB REQUIREMENTS BY 69%*

*Referring to TSCI-600PR-SWG



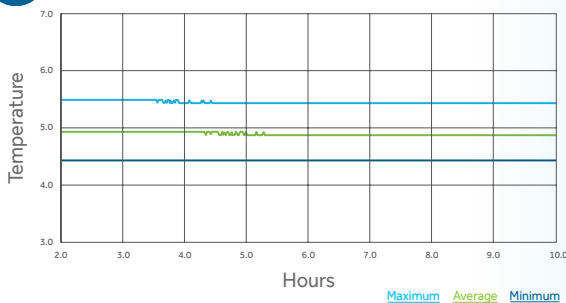
Temperature Stability



Designed to operate within a **narrow temperature range.**



Temperature Uniformity



Ensuring **temperature uniformity** throughout the cabinet.



Utilizes R290 hydrocarbon refrigerant, a redefined eco-friendly refrigerant that has no ozone-depleting properties.

Self-cleaning condenser fan motor technology that reverses the direction of the condensing fan for 20 seconds at each compressor start-up to remove any access debris.

Temperature probe port enabling third-party independent temperature measurement device to be inserted.

Access ports and duplex outlets on laboratory and chromatography cabinets only.

Control alarms include high/low temperature, door ajar, power failure, sensor failure.

Solid door and glass door versions available on all sizes.